



Centers of Excellence in Geriatric Medicine and Geriatric Psychiatry Program

2010 - 2011 - 2012
Scholars



american federation
for aging research



Centers of Excellence in Geriatric Medicine and Geriatric Psychiatry Training Program

The John A. Hartford Foundation Centers of Excellence in Geriatric Medicine and Training Program was initiated in 1988 to address the critical shortage of geriatrics faculty at medical schools and to strengthen the academic geriatrics institutions across the country. Currently, 28 Centers of Excellence are training fellows and faculty in the special knowledge and skills needed to ensure quality healthcare for older adults. To date, over \$53 million has been granted to create a cadre of academic leaders in geriatrics. As our nation ages, we need these leaders to teach optimal care of older adults and conduct the research necessary to improve that care.

The Centers of Excellence National Program Office, established at the American Federation for Aging Research (AFAR), oversees the John A. Hartford Foundation's Centers of Excellence Program.

Message from The John A. Hartford Foundation and the American Federation for Aging Research


In 2009, The John A. Hartford Foundation awarded the American Federation for Aging Research a three-year award to take over the management of the Centers of Excellence Program and create a National Program Office to more effectively meet the nation's urgent need for geriatrician faculty.

The program underwent several significant changes; most notably, a peer review process to identify the most promising fellows and junior faculty in geriatric medicine and geriatric psychiatry in the nation. The revised program, now in its third year, has supported more than 200 fellows and junior faculty.

We are extremely grateful to the members of the Program Advisory Committee, comprised primarily of CoE Directors, who, each year have given an incredibly generous allocation of time to the review. And we are especially grateful for the leadership of William Hall, MD, chair, and Richard Besdine, MD, vice chair of the committee, who so deftly navigated the program transitions. With this publication we congratulate the 2010, 2011, and 2012 Hartford Scholars. To be a Hartford Scholar is to join a prestigious group of some of the nation's best physician-researchers and clinician-educators who are improving the care of older adults. Their commitment to the health and well-being of older adults is changing the landscape of how we treat their medical and social needs. And they will strengthen the training in geriatrics of medical students, residents, and practicing physicians.

Hartford Scholars do not work in a vacuum. They are collaborating with their peers across multiple disciplines and educating and mentoring the next generation of leaders in geriatric medicine. Despite enormous challenges affecting the field and the healthcare system overall, we applaud their resilience and commitment and we are honored and pleased to introduce them in the following pages.

Corinne Rieder, EdD



Executive Director and Treasurer
The John A. Hartford Foundation

Stephanie Lederman, EdM



Executive Director
American Federation for Aging Research

Peter M. Abadir, MD
Assistant Professor of Medicine
Johns Hopkins University
School of Medicine
Pabadir1@jhmi.edu



My research interest is in changes of the angiotensin system and mitochondria with aging. We were the first to report a functional and independently operated angiotensin system that appears to influence energy regulation within the mitochondria. The system is activated by common blood pressure medications, and influences both nitric oxide and energy production when signaled. We also showed that this system declines with age but can be upregulated with Losartan treatment. This system provides a novel foundation for understanding interactions between mitochondria and chronic disease states.

Christina Bell, MD, MS
Assistant Professor of Geriatric Medicine
University of Hawaii John A. Burns School of Medicine
bellcl@hawaii.edu



My Hartford Foundation-funded research is focused on improving the care and quality of life of frail, elderly nursing home patients in Hawaii. I am examining factors associated with survival of nursing home residents, with particular interest in the role of transitions of care and interventions such as tube feeding on survival and quality of life among frail elders. This work informs my GACA-supported project, which is developing an interdisciplinary nursing home team educational intervention to improve oral feeding of frail elderly nursing home patients, especially those who are exclusively tube-fed.

Katherine Bennett, MD
Acting Instructor of Internal Medicine/Geriatrics
University of Washington School of Medicine
bennett4@uw.edu



I am a clinician-educator in geriatric medicine and my Hartford projects include redesigning a chronic care geriatrics rotation for fourth-year medical students and implementing a falls prevention program in an anticoagulation clinic.

Andrea I. Berg, MD
Fellow in Geriatric Medicine
Harvard Medical School
aiberg@bidmc.harvard.edu



I am a geriatric medicine fellow specializing in cognitive disorders, and I am currently piloting a new inpatient consult service for patients admitted with underlying advanced dementia.

Kevin Biese, MD, MAT
Assistant Professor of Emergency Medicine
University of North Carolina School of Medicine
kbiese@med.unc.edu



I am the emergency medicine residency director at UNC Chapel Hill and am focusing my Hartford-supported activities on educating medical students and emergency medicine residents and fellows in acute care of the elderly. I will create a fourth-year medical student course on acute care of older adults/transitions of care, disseminate critical points in caring for older patients with acute abdominal pain and trauma, and develop my own knowledge in geriatric principals of care while starting the UNC Acute Care of Older Adults emergency medicine geriatric fellowship.

C. Barrett Bowling
Instructor/Fellow in Advanced Geriatrics
University of Alabama at Birmingham School of Medicine
bbowling@uab.edu



My long-term career goal is to become an academic geriatrician and leader in aging and chronic kidney disease (CKD) research. As a Hartford Scholar, I have completed research projects identifying the association of CKD with mortality, functional decline, metabolic complications, and incident heart failure among older adults. I plan to develop an innovative geriatric CKD clinic that will provide interdisciplinary care for older adults with kidney disease, serve as a teaching site for residents and fellows, and support recruitment for clinical research studies.

Ella H. Bowman, MD, PhD
Assistant Professor of Clinical Medicine
Indiana University School of Medicine
elbowman@iupui.edu



I am a geriatrician who is also board certified in hospice and palliative medicine. My Hartford Foundation-funded research has centered around developing curricula for geriatrics fellows, internal medicine and med-peds residents, and medical students to educate about the complexities of and ultimately improve hospital-to-home care transitions for frail hospitalized elderly. This includes recognition of unmet palliative care needs and use of prognostic models that will help identify patients who might benefit from such interventions.

Lisa L. Boyle, MD, MPH
Assistant Professor of Psychiatry
University of Rochester School of Medicine and Dentistry
Lisa_Boyle@urmc.rochester.edu



I am the training director of the University of Rochester geriatric psychiatry fellowship program and a provider at the Strong Memorial Hospital Memory Care Program. My academic projects include training interdisciplinary providers to deliver geriatric mental health care in community settings and health services research to improve care for older adults with dementia.

Gwen Bernacki, MD, MHSA
Cardiology Fellow
Duke University School of Medicine
gwen.bernacki@duke.edu



I am a cardiology fellow interested in understanding the effects of aging on the cardiovascular system and optimizing treatments for the elderly.

Marian E. (Emmy) Betz, MD, MPH
Assistant Professor of Emergency Medicine
University of Colorado Denver Anschutz Medical Campus
marian.betz@ucdenver.edu



I am a practicing emergency physician with a research focus on injury prevention among older adults, with a particular focus on older driver safety. I am currently developing a brief screening tool for use in outpatient settings (such as physician offices or emergency departments) that could be used to identify older drivers who would benefit from further evaluation.

Annette Beyea, DO
Advanced Fellow and Clinical Instructor in Geriatric Medicine
University of North Carolina School of Medicine
abeyea@unch.unc.edu



John A. Hartford CoE funding has supported my research efforts to investigate the role of decision aids in facilitating informed, values-based decisions and concordant care among patients with serious illness, coursework toward a Master's Degree in Public Health at the UNC Gillings School of Global Public Health, and further development of my skills in epidemiologic and research methodologies.

Sonica Bhatia, MD
Geriatrics Fellow
New York-Presbyterian Hospital/Weill Cornell Medical College
sonica.bhatia@gmail.com



The purpose of my project is to better examine what barriers clinicians face when discussing advanced care planning with patients and families in the ambulatory setting. I aim to examine how clinician (e.g. type of training) and patient characteristics (e.g. comorbidities and race/ethnicity), as well as the setting (e.g. clinic vs. home visit) influence these discussions. I will survey providers and perform focus groups to gather this information.

Sara M. Bradley, MD
Assistant Professor of Geriatrics and Palliative Medicine
Mount Sinai School of Medicine
sara.bradley@mssm.edu



I am a clinician-educator in geriatrics and also the co-director of the third-year medical students' Integrated Internal Medicine-Geriatrics clerkship. I am developing a curriculum for medical students about geriatric patient safety and transitions of care.

Lynsey E. Brandt, MD, PharmD
Assistant Professor of Clinical Medicine
Perelman School of Medicine at the University of Pennsylvania
Lynsey.Brandt@uphs.upenn.edu



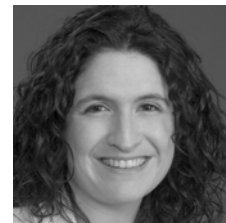
My primary focus as an educator is to develop expertise in geriatrics graduate medical education and faculty development. I plan to utilize my background in pharmacy to improve the discharge instructions and prescribing skills of internal medicine residents. I will also be working to enhance the geriatrics curriculum of the primary care residency program at my institution.

Rebecca T. Brown, MD, MPH
Research Fellow in Geriatric Medicine
University of California, San Francisco School of Medicine
rebecca.brown@ucsf.edu



I am a research fellow in geriatric medicine studying health outcomes and use of health services among underserved geriatric populations, specifically older homeless adults.

Kathryn E. Callahan, MD
Assistant Professor of Internal Medicine
Wake Forest School of Medicine
kecallah@wakehealth.edu



I am a geriatrician whose research focuses on health services and educational interventions to improve quality of care for older adults. My Hartford project focuses on exploring risk predictors for older adults' unnecessary rehospitalization and adverse events during care transitions.

Kellie Hunter Campbell, MD, MA

Assistant Professor of Medicine
University of Chicago School of Medicine
kcampbell@medicine.bsd.uchicago.edu



I am a geriatrician whose research is focused on patient and provider decision making in the management of chronic kidney disease. My clinical work includes geriatric assessment of older adults with advanced chronic kidney disease who are considering renal replacement therapy and evaluation for kidney transplant. I also coordinate a geriatric nephrology lecture series which includes joint journal clubs and case conferences between faculty and trainees in geriatrics, nephrology, and palliative medicine.

Francisco Jose Cardona, MD

Geriatrics Fellow
University of Texas Health Science Center at San Antonio
cardonariver@uthscsa.edu



I completed my internal medicine residency at Hospital La Concepcion in Puerto Rico. I am currently completing my geriatrics fellowship and I am specializing in long-term outcomes of older adults who undergo mechanical ventilation. I am working on a project aimed at improving recognition of delirium in the Intensive Care Unit.

Danelle Cayea, MD, MS

Assistant Professor of Medicine
Johns Hopkins School of Medicine
dcayea1@jhmi.edu



My focus is on enhancing the quality of care received by older adults by improving the relationship-centered communication skills of their physicians. To achieve this, I am working on identifying the role clinical skills exams have in reinforcing or reducing the use of these behaviors. My clinical focus is primary and consultative care of older adults in the community as well as hospital settings, with these sites serving as my primary clinical venues for teaching of learners.

Anna Chang, MD

Associate Professor of Medicine
University of California, San Francisco School of Medicine
anna.chang@ucsf.edu



I am a clinician-educator, leader, and scholar focusing on clinical skills and curriculum development in geriatrics and undergraduate medical education. I am currently leading a systematic review of geriatrics curricula mapped to the medical student geriatrics competencies.

Maria Y. Cipriani, MD

Geriatrician, Internist
(CoE: the University of Texas Health Science Center at San Antonio)
(no email address available)



During my fellowship at the UT Health Science Center in San Antonio I studied the biology, development, management, and prevention of insulin resistance with increasing age, with a clinical interest in the management of diabetes in older persons with Type 2 diabetes mellitus and its complications. I am currently a practicing geriatrician in the San Antonio area.

Melissa J. Cohen, MD

Assistant Clinical Professor of Medicine
David Geffen School of Medicine at UCLA
mjcohen@mednet.ucla.edu



I am a practicing hematologist/oncologist who completed a fellowship in geriatric oncology. During my fellowship I focused on applying geriatric assessments to oncology patients. I developed an interactive teaching module on the American Society of Clinical Oncology University website on geriatric assessment in older cancer patients, which is used by oncology fellows and licensed oncologists for continuing education credit. My research was focused on using geriatric screening tools to help predict chemotherapy tolerance in older patients with cancer.

Jessica L. Colburn, MD

Instructor of Medicine
Johns Hopkins University School of Medicine
jcolbur1@jhmi.edu



I am a geriatrics faculty member with clinical work focusing on geriatric primary care and house calls, and I am currently developing a curriculum to teach physicians-in-training how to partner with caregivers of older adults.

Timothy Mark Corbett, MD

Geriatric Medicine Research Fellow
Wake Forest School of Medicine
tcorbett@wakehealth.edu



I am a second-year geriatric medicine fellow specializing in the healthcare of our older adults within long-term care, and I am currently developing a videoconference training curriculum for members of the long-term care interdisciplinary team, focused on teamwork skills and interprofessional geriatric competencies.

Sandy S. Chang, MD, MHS

Instructor of Medicine
Yale School of Medicine
sandy.chang@yale.edu



I am a geriatrician whose long-term objective is to improve the care and health outcomes of older adults with multimorbidity. My current line of research focuses on enhancing our understanding of multimorbidity in older adults with chronic obstructive pulmonary disease (COPD) as the index condition. My Hartford project seeks to determine the impact of co-existing cognitive impairment on adverse health outcomes in older adults with COPD.

Serena Hsiou-Ling Chao, MD, MSc

Assistant Professor of Medicine
Boston University School of Medicine
serena.chao@bmc.org



I used my Hartford funding (project period 2010-2011) to develop, refine, and evaluate curricula for internal medicine residents surrounding the care of older hospitalized patients and their transitions from site to site.

Anna H. Chodos, MD, MPH

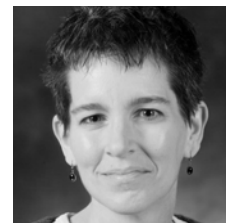
Clinical Fellow of Geriatrics
University of California, San Francisco School of Medicine
anna.chodos@ucsf.edu



Working in the Department of Public Health in San Francisco, I am studying models of care in the outpatient setting to improve the care of socially complex and vulnerable elders. I am involved in teaching primary care residents about outpatient geriatric care.

Christine T. Cigolle, MD, MPH

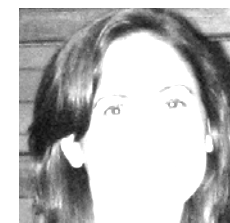
Assistant Professor of Family Medicine
University of Michigan School of Medicine
ccigolle@umich.edu



I study geriatric multimorbidity, specifically the role of geriatric conditions in contributing to multimorbidity and the relationship between geriatric conditions and frailty and disability. I am supported by a K08 Mentored Clinical Scientist Research Career Development Award through the National Institute on Aging (Geriatric Conditions and Disablement in the Older Population).

Amy M. Corcoran, MD

Assistant Professor of Clinical Medicine
Perelman School of Medicine at the University of Pennsylvania
amym.corcoran@uphs.upenn.edu



I am developing and implementing an education session into the existing Aging Theme Curriculum that will introduce medical students to the importance of the long-term care setting in caring for older adults.

Denise R. Dahm, MD

Clinical Assistant Professor of Medicine/Geriatrics
University of Texas Health Science Center at San Antonio
dahm@uthscsa.edu



With Hartford support I am addressing the psychosocial needs of patients and families during times of health care transition. I am working on a transitions of care curriculum for our trainees and staff and developing an interdisciplinary transitional care clinic.

Linda V. DeCherrie, MD

Assistant Professor of Geriatrics and Palliative Medicine
Mount Sinai School of Medicine
Linda.decherrie@mounsinai.org



I focus on the training of internal medicine house staff in geriatrics, developing alternative models of training that are integrated into existing rotations without requiring a block rotation in geriatrics. Each of these models involves residents seeing their own patients in a 'geriatricized' context. I have implemented a transitional care curriculum for medicine interns and am currently redesigning it within the new schedule and implementing an evaluation.

Julio C. Defillo, MD

Assistant Professor of Medicine (Geriatrics) (as of July 2012)
Warren Alpert Medical School of Brown University
jcdefillo@gmail.com



My specialty is in clinical education, and I am currently working to create teaching instruments and simulations that could improve the care of elders affected by delirium in the emergency department.

Ian M. Deutchki, MD
Senior Instructor
University of Rochester School of
Medicine and Dentistry
ian_deutchki@URMC.Rochester.edu



I am currently developing a geriatrics curriculum for family medicine residents to include geriatric consultative services within the residency practice and reorganizing the residents' long-term care experience.

Kumar Dharmarajan, MD, MBA
Postdoctoral Research Fellow
Yale School of Medicine
kumar.dharmarajan@yale.edu



I am a cardiology fellow interested in improving systems of care for older persons, and I am studying treatment complexity and acute multimorbidity in patients hospitalized with heart failure.

Kimberly Dodd, MD, MSc
Assistant Professor of Internal
Medicine and Family Medicine
Warren Alpert Medical School
of Brown University
kimberly_dodd@brown.edu



I am the primary geriatric clinician-educator for the family medicine and internal medicine residents at Memorial Hospital of Rhode Island. I am currently developing a curriculum to standardize the educational experience as it relates to the core geriatric competencies.

Nadine Dubowitz, MD, MPH
Assistant Professor of Medicine
Emory University School of Medicine
ndubow2@emory.edu



I am currently a VA research fellow through the VA Special Fellowship in Advanced Geriatrics. My research is focused on diabetes in older adults, analyzing the impact of age on A1c, and aiming to improve our understanding of diabetes in the older adult population.

Gary Epstein-Lubow, MD
Assistant Professor of Psychiatry
Warren Alpert Medical School of
Brown University
Gary_Epstein-Lubow@Brown.edu



I am a geriatric psychiatrist with clinical expertise in psychiatry inpatient care services and research expertise with family caregivers and the development of psychosocial treatments for dementia. My Hartford Foundation-supported work focuses on improving the post-hospital transition for individuals with advanced dementia, and enhancing support services for family caregivers, to prevent unnecessary rehospitalization.

Kristine Mace Erlandson, MD
Instructor in Infectious Disease
University of Colorado Denver
Anschutz Medical Campus
kristine.erlandson@ucdenver.edu



I am an Infectious Disease Instructor specializing in functional capacity/frailty among persons aging with HIV-infection. I am currently investigating mechanisms of inflammation and immune activation among functionally-impaired persons with HIV.

Manuel A. Eskildsen, MD, MPH
Assistant Professor of Medicine
Emory University School of
Medicine
meskild@emory.edu



I am a geriatrician specializing in subacute and long-term care, and my academic project has been the development of care transitions curricula for fourth-year medical students and internal medicine residents at Emory.

Maryam Farazmand, MD
Advanced Geriatrics Fellow
David Geffen School of Medicine
at UCLA
sfarazmand@mednet.ucla.edu



I am an advanced geriatrics fellow specializing in assessment of driving in the geriatric population. I am currently developing a curriculum for geriatric fellows about the diagnosis and assessment of geriatric population driving behavior.

Rina Eisenstein, MD
Clinical Instructor in Medicine
Emory University School of
Medicine
reisen2@emory.edu



I am a geriatrician and sleep physician who specializes in treating older people with various sleep disorders. I am currently developing curricula for geriatric medicine fellows about sleep disorders in the elderly and also developing curricula for sleep medicine fellows regarding geriatric syndromes.

Brian M. Eiss, MD
Clinical Fellow in Geriatrics and
Gerontology
New York Presbyterian Hospital/
Weill Cornell Medical College
bme9001@nyp.org



I am a fellow in geriatric medicine specializing in patient safety and quality improvement with an interest in palliative care. I am currently studying symptom burden in those hemodialysis patients who are deemed unsuitable candidates for renal transplant. The goal is to develop a multicomponent palliative care intervention that targets this vulnerable and understudied subgroup of patients.

Justin Endo, MD, FAAD
Assistant Professor of Dermatology
University of Wisconsin-Madison
School of Medicine and Public
Health
jendo@dermatology.wisc.edu



I am dual-boarded in internal medicine and dermatology, with geriatrics, medical education, and dermatology as my academic niches. My long-term goals are to become a nationally renowned clinical expert and educator in the emerging field of geriatric dermatology, who teaches medical trainees, primary care physicians, geriatricians, and dermatologists how older patients with dermatoses can be optimally managed, as well as a medical education research scholar who develops effective and individualized curriculum and evaluative tools using new learning technologies.

Jessica A. Eng, MD
Geriatric Medicine Fellow
Boston University School of
Medicine
jessica.eng@bmc.org



I am a geriatric medicine fellow interested in improving the quality of care for older men and women with cancer. My current project focuses on the effect of self-rated health and walking limitations on ten-year mortality in older women with breast cancer.

Emily S. Finkelstein, MD
Assistant Professor of Medicine
Weill Cornell Medical College
emf9009@med.cornell.edu



I am an Assistant Professor of Medicine in the Division of Geriatrics, and I am focusing on further developing the collaboration between a community social services agency and an urban house calls program in providing multi-disciplinary care to frail, homebound older adults. I am introducing medical students, residents, and fellows to the important role that a community agency, and our collaboration with a community agency, can play in the care of frail older adults in the community.

Alfred L. Fisher, MD, PhD
Assistant Professor of Medicine
University of Pittsburgh School of
Medicine
afisher@pitt.edu



I am a geriatric medicine junior faculty member who uses C. elegans to study metabolic changes in aging and sarcopenia.

Lynn A. Flint, MD
Assistant Clinical Professor of
Medicine
University of California, San
Francisco School of Medicine
Lynn.flint2@va.gov



I am an early-career faculty member specializing in palliative medicine, and I plan to develop a curriculum using entrustable professional activities to help residents and fellows improve their skills in communicating with elders facing serious illnesses.

Jesse E. Foote, MD
Geriatric Medicine Fellow
Harvard Medical School
jfoote@bidmc.harvard.edu



I am a second-year geriatric medicine fellow and I have been leading a quality improvement project with the aim of implementing educational and systems-based interventions to increase rates of osteoporosis treatment for older patients admitted to the Beth Israel Deaconess Medical Center Orthopedic service following fragility fracture. Through our efforts we have succeeded in increasing the rates of calcium, vitamin D, and bisphosphonate prescribing for these patients.

Constance H. Fung, MD, MSHS

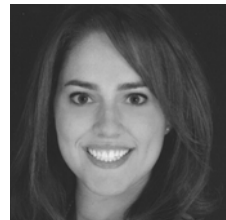
VA Advanced Geriatric Medicine Fellow
David Geffen School of Medicine at UCLA
constance.h.fung@gmail.com



I am a VA Advanced Geriatric Medicine Fellow who is specializing in geriatric sleep medicine, and I am currently developing a program to improve treatment of older adults with sleep apnea.

Gelareh Z. Gabayan, MD, MSHS

Assistant Professor of Medicine/
Emergency Medicine
David Geffen School of Medicine at UCLA
gelareh@gabayan.com



I am an emergency medicine health services researcher focused on improving emergency department care for older adults through assessing the predictors of poor outcomes following the emergency encounter. Understanding these predictors will help shape my future research aimed at developing interventions, such as patient discharge tools or checklists that will improve patient safety.

David A. Ganz, MD, PhD

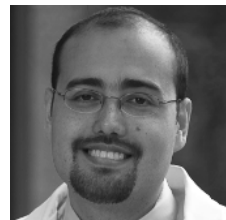
Assistant Professor in Residence
David Geffen School of Medicine at UCLA
dganz@mednet.ucla.edu



I am a geriatrician-researcher focused on developing better quality improvement programs to prevent falls. Our research team has created and evaluated a program to prevent falls using an electronic health record-based clinical reminder system in primary care clinics.

Cesar H. Garcia, MD

Advanced Geriatrics Fellow
University of Texas Health Science Center at San Antonio
garcia5@uthscsa.edu



I am an advanced geriatrics fellow who is interested in the association of health literacy levels between Hispanic geriatric patients and their caregivers and the impact of health literacy on their health status. I conducted a study of 174 patient-caregiver dyads to answer these questions.

Adit A. Ginde, MD, MPH

Assistant Professor of Emergency Medicine
University of Colorado Denver
Anschutz Medical Campus
adit.ginde@ucdenver.edu



I am studying the role of high dose vitamin D supplementation in immune responses to infection and vaccines in older long-term care residents.

Robert Gorney, MD

Geriatric Psychiatry Clinical Fellow
University of California, San Diego
Medical School
rgorney@ucsd.edu



I am committed to an academic career as a clinician educator, with an emphasis on geriatric psychiatry and addictions. My research plan is to link these interests to my clinical duties as a fellow and assist with a curriculum with a focus on addiction for residents and medical students in their geriatric psychiatry rotations. My long term goal is to become an academic clinician and medical educator specializing in both geriatric and addiction psychiatry. My current interest is the relationship between alcohol use in the older population and successful aging.

Marianthe Grammas, MD

Clinical Fellow, Geriatric Medicine
Yale School of Medicine
marianthe.grammas@yale.edu



I am a geriatric medicine fellow planning to pursue a career as an academic geriatrician/clinician-educator. My project involves developing a mini-curriculum for internal medicine residents on the patient-centered approach to complex older adults, specifically as it relates to rational medication prescribing practices.

Tanya R. Gure, MD

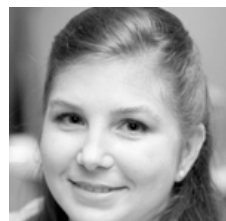
Assistant Professor of Geriatric Medicine
University of Michigan School of Medicine
tanruff@umich.edu



I am a geriatrician whose clinical interests are in providing high-quality primary care to medically-complex older adults. My research focuses on the epidemiology of cognitive impairment in older adults with heart failure.

Laura P. Gelfman, MD

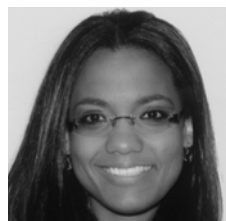
Associate
Mount Sinai School of Medicine
Laura.Gelfman@mssm.edu



I am currently in a one-year dedicated research fellowship in palliative medicine with a focus on the role of palliative medicine for older adults with heart failure. Specifically, I am examining how palliative medicine impacts the health care utilization and costs of hospitalization of older patients with heart failure.

Liza Genao, MD

Post-Doctoral Scholar
Duke University School of Medicine
liza.genao@duke.edu



I am a geriatric fellow clinician-investigator looking to improve the outcomes of older adults with end-stage lung diseases. I am currently analyzing the impact of lung transplantation on patients' use of healthcare resources.

Maria Kristina Gestuvo, MD, MHA

Assistant Professor of Geriatrics and Palliative Medicine
Mount Sinai School of Medicine
kristina.gestuvo@mssm.edu



I am developing a conversation framework that will act both as a decision support and documentation tool to help primary care physicians frame their conversations with older adults on colorectal cancer screening (CRCS) with colonoscopy. This framework will incorporate the latest guidelines and evidence reports on CRCS, time to benefit from screening, benefits, harms, burdens, and prognosis.

Suzanne M. Gillespie, MD, RD

Assistant Professor of Medicine
University of Rochester School of Medicine and Dentistry
suzanne_gillespie@urmc.rochester.edu



My research and teaching focus on using quality improvement to teach geriatrics and improve quality of care for older adults. Current projects include a quality improvement learning collaborative for rural and underserved nursing homes, a geriatric education initiative for hospitalists, medical, and surgical sub-specialists, and participation on a project developing a telemedicine-enhanced care model for assisted living residences.

Anne Halli-Tierney, MD

Assistant Professor of Medicine
University of Alabama at Birmingham School of Medicine
ahallitierney@aging.uab.edu



I aspire to become a leading geriatrics educator and aim to achieve excellence in clinical and academic geriatrics, and I also hope to inspire others to pursue careers in geriatrics. I plan to develop several curricula, for multiple educational levels, to disseminate practical knowledge necessary to care for the complicated older patient. I will provide outstanding care for the elderly and will train other clinicians who will be able to meet the medical needs of the growing elder population and who will be willing to educate future generations in geriatric care.

Angela J. Hanson, MD

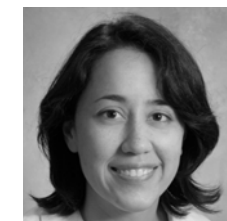
Senior Fellow, Geriatric Medicine
University of Washington School of Medicine
hansonaj@uw.edu



I am a geriatrics fellow actively involved in clinical research in the field of dementia. Our laboratory investigates the role of insulin in cognition, and how metabolic risk factors such as obesity and insulin resistance may play a role in causing Alzheimer's disease.

Caroline N. Harada, MD

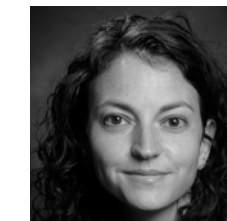
Assistant Professor of Medicine
University of Alabama at Birmingham School of Medicine
charada@aging.uab.edu



I am a junior faculty member in the Division of Gerontology, Geriatrics, and Palliative Care at UAB. I am currently working on the development of an online curriculum on geriatrics for residents, as well as a Train the Trainer workshop for health professions faculty interested in teaching geriatrics.

Heather L. Herrington, MD

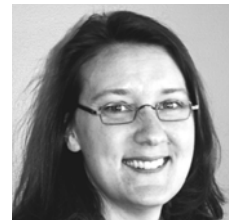
Assistant Professor of Medicine
University of Alabama at Birmingham School of Medicine
hlh@uab.edu



I am a geriatrician and current GACA awardee. I am developing a curriculum to teach geriatrics principles to hospice providers, primarily in the community outside of our academic center.

Kerry L. Hildreth, MD

Instructor of Geriatric Medicine
University of Colorado Denver
Anschutz Medical Campus
Kerry.hildreth@ucdenver.edu



I am a geriatrician interested in studying the relation between cardiometabolic risk and cognitive impairment in older adults. My current research focuses on the potential roles of insulin resistance and vascular dysfunction in the development and progression of cognitive impairment.

Lianne Hirano, MD

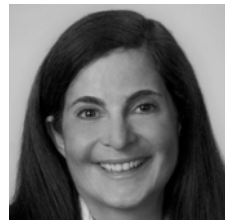
Acting Instructor in Geriatric Medicine
University of Washington School of Medicine
Lhirano@uw.edu



My primary research interest is to better understand the way diagnosis and treatment for male osteoporosis are conducted within the VA, in order to assure quality care is being provided to VA patients and to minimize the risk of fractures and the considerable disability and health care costs they incur. My long-term goal is to be a successful, independent academic physician/scientist, and leader in improving care of older adults.

Teresita M. Hogan, MD

Assistant Professor/Director
Geriatric Emergency Medicine
University of Chicago School of Medicine
thogan@medicine.bsd.uchicago.edu



I will be teaching emergency medicine residents "Emergency Department Care of the Older Adult Patient" based on the Geriatric Competencies for Emergency Medicine Residents. I will be PI in a project developing optimal emergency department pain management for older adults. This project involves education of all emergency department staff as well as ongoing performance improvement in this area.

Katriina M. Hopper, MD

Postdoctoral Fellow in Geriatric Clinical Epidemiology
Yale School of Medicine
katriina.hopper@yale.edu



I am a geriatric medicine fellow with an interest in preferences for end-of-life care in older adults and patient-clinician communication. I am currently studying older persons' experiences of inpatient advance care planning.

William W. Hung, MD, MPH

Assistant Professor of Geriatrics and Palliative Medicine
Mount Sinai School of Medicine
William.hung@mssm.edu



I am a junior faculty member in geriatrics who is interested in developing and evaluating geriatric models of care. I am currently conducting projects to evaluate a novel inpatient model for care for older adults and to implement a care transitions model.

Alana Iglewicz, MD

Geriatric Psychiatry Research Fellow
University of California, San Diego School of Medicine
aiglewicz@ucsd.edu



I am a geriatric psychiatry research fellow specializing in the treatment of bereavement and late-life depression. Additionally, I research ways in which to inspire trainees to pursue careers in geriatric medicine and geriatric psychiatry.

Tochukwu C. Iloabuchi, MBBS

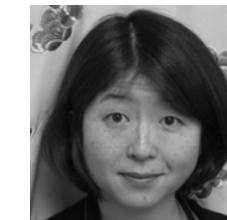
Second Year Fellow in Geriatric Medicine
Indiana University School of Medicine
tociloab@iupui.edu



I am an advanced geriatrics fellow and clinician-educator interested in transitions and coordination of care across different settings, readmission prevention, and care of complex older adults. Hartford funding will support: my Clinical Investigator and Translational Education training program for research skill enhancement; the development, implementation, and evaluation of my curriculum for medical residents on transitions from skilled nursing facilities to the community; and additional study of risk factors for early readmission among low income community dwelling seniors.

Michiko Inaba, MD

Assistant Professor of Geriatric Medicine
University of Hawaii John A. Burns School of Medicine
mckinaba@hotmail.com



I am an academic geriatrician interested in clinical research in dementia and Parkinson's disease, specifically in the interdisciplinary care of these patients in long-term care, and have developed curricula on this subject for medical students, residents, fellows and allied health professionals. I am also a co-investigator in the Honolulu-Asia Aging Study, a 20-year longitudinal cohort study of dementia in Japanese-American men in Honolulu, and recently received a small grant from the National Parkinson Foundation to conduct analyses on these data.

Leora I. Horwitz, MD, MHS

Assistant Professor of Internal Medicine
Yale School of Medicine
leora.horwitz@yale.edu



I am a general internist studying transitions of care among older patients, particularly those involving discharge from hospital to home.

Shahla Hosseini, MD, PhD

Assistant Professor of Physical Medicine and Rehabilitation
(as of July 2012)
University of Pittsburgh School of Medicine
hosseinis@upmc.edu



I am a physiatry resident in my final year of training, who is interested in fostering clinical and research collaborations between physiatry and geriatrics. I plan to develop a clinical education program for geriatricians and primary care providers on the evaluation of low back pain in older adults.

Deborah Huang, MD

Advanced Fellow in Geriatrics
University of Washington School of Medicine
huangdx@uw.edu



I am researching the association between oral health and quality of life in older adults with diabetes, and am also researching how to reduce potentially inappropriate medication use in older adults.

Megan Huisinigh-Scheetz, MD, MPH

Assistant Professor of Medicine
University of Chicago School of Medicine
megan.huisinigh-scheetz@uchospitals.edu



I recently completed both a clinical geriatrics fellowship and an advanced geriatrics research fellowship at the University of Chicago. As a new faculty member, I am studying the relationship between obesity and frailty and how physical activity plays a role in preventing frailty progression.

Adriana Izquierdo, MD

Clinical Instructor of Medicine/
General Internal Medicine
David Geffen School of Medicine at UCLA
aizquierdo@mednet.ucla.edu



I am a bilingual/bicultural Mexican-American primary care internist trained in health services research. My career goal is to become an innovator and leader in Latino aging-related research and medicine. I seek to advance knowledge about older adult Latinos' engagement in and access to health care services for depression and other chronic illnesses, and develop novel, culturally-appropriate care interventions for use in community and primary care settings to promote the quality of life of low-income older adult Latinos with depression.

Todd James, MD, FACP

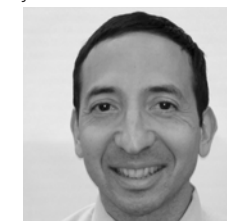
Assistant Professor of Clinical Medicine
Indiana University School of Medicine
tojames@iupui.edu



My research focuses on developing innovative methods for teaching geriatric medicine and interprofessional team care, evaluating interprofessional team care, and improving health care delivery to vulnerable seniors.

Carlos A. Jaramillo, MD, PhD

Advanced Fellow, Department of Rehabilitation Medicine
(as of July 2012)
University of Texas Health Science Center at San Antonio
jaramillo3@uthscsa.edu



As a rehabilitation medicine specialist, I am interested in understanding and treating the neuromusculoskeletal disorders that affect function and performance in older adults. Currently, I am using mouse models of neuro- and neuro-muscular degeneration to study the molecular and cellular mechanisms of sarcopenia and neuromuscular aging.

Houman Javedan, MD

Instructor in Medicine
Harvard Medical School
hjavedan@partners.org



I am a geriatrician who specializes in teaching geriatric clinical reasoning to geriatrics fellows. I have developed the Harvard Geriatric Clinical Reasoning Curriculum for the Harvard Geriatric Medicine Fellowship and am currently teaching the course. On the clinical side, I am developing collaborative services between geriatrics and surgical specialties at Brigham and Women's Hospital.

Noel S.C. Javier, MD

Clinical Assistant Professor of Medicine and Pediatrics
Warren Alpert Medical School of Brown University
njavier@lifespan.org



I am a junior faculty member in the clinician-educator track specializing in the provision of high quality palliative care service to geriatric and pediatric patients. I am also the associate program director for the Hospice and Palliative Medicine Fellowship program at Brown.

Lee A. Jennings, MD

Primary Care Health Services Research Fellow
David Geffen School of Medicine at UCLA
LAJennings@mednet.ucla.edu



I am an internist and geriatrician and currently a first-year health services research fellow. My research program focuses on ways to improve multidisciplinary care for older adults with HIV. My proposed Hartford project is to conduct a pilot study examining the feasibility of implementing a program to identify and address geriatric syndromes in HIV-infected adults 50 years of age and older in an HIV care setting.

Trevor A. Jolly, MBBS

Geriatric Oncology Fellow
University of North Carolina School of Medicine
Trevor_jolly@med.unc.edu



I am a board-certified internist and geriatrician currently pursuing the geriatric oncology track of a medical oncology fellowship. My research, teaching, and scholarly interests focus on the Comprehensive Geriatric Assessment and its ability to predict chemotherapy toxicity, morbidity, and mortality in older adults with cancer.

Anna Jovanovich, MD

Nephrology Fellow
University of Colorado Denver Anschutz Medical Campus
anna.jovanovich@ucdenver.edu



I am interested in how changes in kidney function, fibroblast growth factor-23, and active vitamin D (1,25 dihydroxy-vitamin D) affect immune function in older adults.

Amy S. Kelley, MD, MSHS

Assistant Professor of Geriatrics and Palliative Medicine
Mount Sinai School of Medicine
amy.kelley@mssm.edu



I am a geriatrician and palliative care physician, specializing in health services research. I am currently working with the Health and Retirement Study and Medicare claims data to investigate the patient and regional factors associated with treatment intensity among older adults with serious illness.

Laurel Kilpatrick, MD

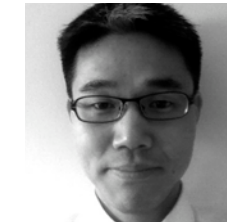
Palliative Care Fellow
University of Alabama at Birmingham School of Medicine
lkilpatrick@aging.uab.edu



I am a palliative care fellow with training in geriatrics, and I plan to develop a curriculum for medical residents on the geriatrics rotation in order to improve palliative care education in the nursing home.

Dae Hyun Kim, MD, MPH

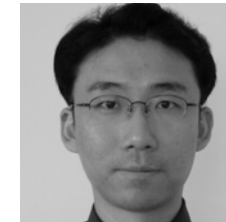
Instructor in Medicine
Harvard Medical School
dkim2@bidmc.harvard.edu



I am a geriatrician and clinical investigator who is investigating the role of subclinical vascular disease in age-related functional loss and disability. I am also interested in clinical prediction modeling and epidemiological methods.

Jung-hoon Kim, MD

Instructor of Medicine
Perelman School of Medicine at the University of Pennsylvania
Jung-hoon.kim@uphs.upenn.edu



I am a clinician-scientist in geriatric medicine and I have been conducting research on the role of circulating osteogenic precursor cells in fracture healing and bone formation.

Scott A. Kaiser, MD

NRSA Primary Care and Health Services Research Fellow
David Geffen School of Medicine at UCLA
skaiser@mednet.ucla.edu



I am a family physician and geriatrician interested in healthy aging and in developing media to improve the health and quality-of-life of older adults. Working through a community-partnered collaborative, I am producing a theoretically-grounded television series promoting the adoption and maintenance of exercise and physical activity. "On The Move" follows the lives of twelve individuals as they take strides towards health to become and stay active. The series will air on Los Angeles CityView 35 and will be presented through a series of community-based viewing events.

Mily Kannarkat, MD

Assistant Professor of Internal Medicine
Eastern Virginia Medical School (CoE: Johns Hopkins University School of Medicine)
kannarmj@evms.edu



I am currently the Clerkship Director of Internal Medicine for third-year medical students at Eastern Virginia Medical School. While I was a fellow at Johns Hopkins, I developed and implemented a curriculum, Application of Clinical Reasoning to the Physical Exam, for all third-year medical students at the start of their Internal Medicine clerkship. In addition, I created, implemented, and evaluated a formal outpatient geriatric curriculum for Internal Medicine residents.

Helen Kao, MD

Assistant Professor of Medicine
University of California, San Francisco School of Medicine
Helen.kao@ucsf.edu



My work is focused on building academic-community partnerships to cultivate interdisciplinary geriatrics education for learners at all levels.

Marianna Karounos, DO

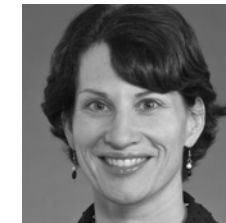
Geriatric Emergency Medicine Fellow/Instructor of Medicine
New York Presbyterian Hospital/Weill Cornell Medical College
mak9128@med.cornell.edu



I am a geriatric emergency medicine fellow interested in substance abuse in the elderly, and I am currently doing research on alcohol withdrawal in the geriatric population.

Heidi D. Klepin, MD, MS

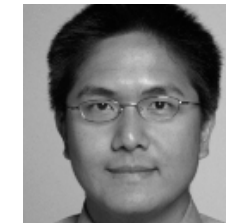
Assistant Professor of Internal Medicine
Wake Forest School of Medicine
hklepin@wakehealth.edu



I am a geriatric oncologist with the following research themes: 1) developing improved assessment strategies to predict chemotherapy toxicity among older cancer patients; 2) evaluating the impact of chemotherapy on physical and cognitive function; and 3) designing behavioral interventions to minimize disability among older cancer patients. I am currently performing a randomized pilot study of a tailored physical activity intervention for older inpatients receiving intensive chemotherapy for acute leukemia.

Fred C. Ko, MD, MS

Assistant Professor of Geriatrics and Palliative Medicine
Mount Sinai School of Medicine
fred.ko@mssm.edu



I am a geriatrician and clinician-scientist currently developing a surgical mouse model in order to investigate molecular changes induced by surgery and anesthesia that increase risks for adverse postoperative outcomes.

Steve Koh, MD, MPH, MBA

Geriatric Psychiatry Research Fellow
University of California, San Diego School of Medicine
sskoh@ucsd.edu



I am a geriatric psychiatry research fellow studying the relationships of work and successful aging, and physician well-being and aging. I am participating in standardized encounters with older patients for medical students and supervising junior residents in psychiatry.

Ilona M. Kopits, MD, MPH

Assistant Professor of Medicine
Boston University School of Medicine
ilona.kopits@bmc.org



I am working in the Geriatrics Section at Boston University and at the Uphams Corner Elder Service Plan (PACE) in Boston, Massachusetts. My project is to pilot a newly developed function and disability assessment tool in the PACE population.

Tia Rose Milanese Kostas, MD
Instructor of Medicine
(as of July 2012)
Harvard Medical School
tkostas@partners.org



At the start of the award, I will be an instructor of medicine working on a project to improve the competencies of second-year internal medicine residents at Brigham and Women's Hospital in the areas of medication reconciliation and polypharmacy through innovative teaching methods.

Daniel B. Kramer, MD
Clinical Fellow in Medicine
Harvard Medical School
dkramer@bidmc.harvard.edu



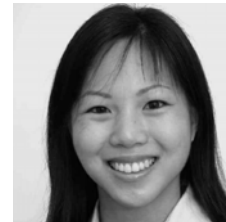
I am a cardiac electrophysiology fellow with a research focus on outcomes, policy, and ethics questions surrounding the use of cardiac devices. My Hartford-funded project will evaluate outcomes following ICD implantation and replacement in older patients.

Chandrika Kumar, MD
Assistant Professor of Internal Medicine
Yale School of Medicine
chandrika.kumar@yale.edu



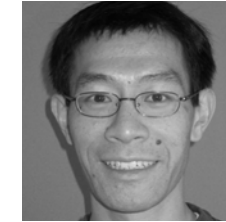
My main responsibility as a clinician-educator is to coordinate the internal medicine residency geriatric rotation. My Hartford Foundation-funded scholarly project includes: 1) developing and implementing a unique geriatric curriculum for internal medicine residents encompassing in-hospital Acute Care for the Elderly (ACE) unit and non-hospital (subacute, long term care, primary care) components and 2) developing a geriatric core competencies-based tool for faculty evaluation of medical residents.

Neda Laiteerapong, MD
Clinical Instructor of Medicine/
General Medicine Fellow
University of Chicago School of Medicine
nlaiteerapong@uchicago.edu



I am a general internal medicine fellow specializing in diabetes in older populations and am currently studying racial and ethnic differences in quality of life among older adults with diabetes.

Richard H. Lee, MD, MPH
Medical Instructor (as of July 2012)
Duke University School of Medicine
r.lee@duke.edu



I am dual-trained in geriatric medicine and endocrinology, specializing in osteoporosis and metabolic bone disease. I am currently researching the interaction between osteoporosis and diabetes mellitus among older adults.

Sei J. Lee, MD, MAS
Assistant Professor of Medicine
University of California, San Francisco School of Medicine
Sei.lee@ucsf.edu



I am a clinician-researcher focusing on the care of older patients with diabetes in the nursing home.

Won M. Lee, MD
Assistant Professor of Medicine,
Geriatrics Section
Boston University School of Medicine
won.lee@bmc.org



I am a clinician-educator working in the Boston Medical Center ambulatory clinic and home care program. I am developing group patient visits in the geriatrics ambulatory clinic with a focus on interdisciplinary care and education.

Betty Lim, MD
Assistant Professor of Geriatrics
and Palliative Medicine
Mount Sinai School of Medicine
betty.lim@mssm.edu



I am a geriatric and palliative medicine physician specializing in geriatric palliative care for nursing home settings. I am developing a geriatric palliative care curriculum for nursing home interdisciplinary staff with a focus on communication and symptom management.

Jordan E. Lake, MD
Assistant Clinical Professor of
Medicine, Infectious Diseases
David Geffen School of
Medicine at UCLA
jlake@mednet.ucla.edu



I am a junior faculty member in the UCLA Division of Infectious Diseases. My research focuses on novel interventions to treat and prevent the inflammation- and aging-related complications of HIV infection and antiretroviral therapy.

Michael A. LaMantia, MD, MPH
Assistant Professor of Medicine
Indiana University School of
Medicine
malamant@iupui.edu



I am a geriatrician and am currently investigating the care that vulnerable older adults with delirium receive in the emergency department.

Nicole M. Lanouette, MD
Assistant Professor of Psychiatry
University of California, San Diego
School of Medicine
nlanouette@ucsd.edu



I am an assistant professor of psychiatry. My Hartford Foundation-funded research focuses on using Problem Solving Therapy to treat depression symptoms in older adults with schizophrenia.

Pearl G. Lee, MD, MS
Assistant Professor of Internal
Medicine
University of Michigan School of
Medicine
pearllee@med.umich.edu



I am a geriatrics junior faculty member specializing in the relationship between geriatric conditions, physical disabilities, physical activities, and chronic diseases (i.e., diabetes mellitus) in middle-aged and older adults. I am currently developing a study to better understand disabilities in older adults so that appropriate targeted interventions can be developed in the near future.

Seema S. Limaye, MD
Assistant Professor of Medicine
University of Chicago School of
Medicine
slimaye@medicine.bsd.
uchicago.edu



I am a geriatrics clinician-educator with an emphasis on interdisciplinary, culturally-competent geriatric medical care with a specific focus on improving the transition of care our patients face. Currently, I am implementing a longitudinal, systems-based practice geriatrics curriculum within the Pritzker School of Medicine that addresses the AAAMC Geriatric Core Competencies.

Evgenia Litrivis, MD
Assistant Professor of Geriatrics,
Palliative Medicine and Hospital
Medicine
Mount Sinai School of Medicine
Evgenia.Litrivis@exchange.mssm.
edu



I am a geriatrics and palliative care attending whose interests lie in complex medical decision making and medical prognostication. I am currently developing a curriculum for geriatric fellows and medicine housestaff about evidence-based medical prognostication.

Christine Liu, MD, MSc
Assistant Professor of Medicine
Boston University School of
Medicine
Christine.Liu@bmc.org



As a physician-scientist, I study functional outcomes, with a focus on older adults with sarcopenia or chronic kidney disease. By studying the functional impact of these conditions, my goal is to identify modifiable factors and possible interventions that will prevent physical dependence in elders.

Dandan Liu, MD
Clinical Fellow in Geriatrics
University of California, San
Francisco School of Medicine
Dandan.Liu@ucsf.edu



My long-term goal is to become a leading clinician-educator in geriatrics. My focus is on the development and application of curricula to enhance learning in care transitions, and tailor interventions to the care of elders with language barriers—specifically, older Chinese patients whose language and culture often marginalize them in the US healthcare system. I will approach this through integration of community-based and hospital-based care involving partnerships with hospitalists and inpatient-based administration to facilitate handoffs.

Alexander Lo, MD, PhD
Assistant Professor of Emergency
Medicine
University of Alabama at
Birmingham School of Medicine
alexanderlo@uabmc.edu



I am an emergency physician specializing in geriatric emergency medicine and am interested in developing both clinical protocols and an educational curriculum for emergency physicians in the management of geriatric patients in the emergency department.

Serena Lo, MD
Advanced Fellow in Geriatrics
University of Washington School of
Medicine
serenalo@u.washington.edu



I am a geriatric fellow researching osteoporosis in the veteran population.

Karen Lubimir, MD, DMD
Assistant Professor of Geriatric
Medicine
University of Hawaii John A. Burns
School of Medicine
klubimir@hawaii.edu



My area of interest is health literacy and improving the health outcomes for culturally diverse geriatric populations. As an academic clinician-educator I have created curricula to incorporate geriatric health literacy and cross-cultural health care education into medical and allied health professional training. Acknowledging the critical role of caregivers in the delivery of health care for the elderly, I plan to develop, implement, and teach interventional strategies to most effectively work with caregivers.

Helen Lum, MD
Assistant Professor of Internal
Medicine
University of Texas Health Science
Center at San Antonio
lumh@uthscsa.edu



I am a geriatrician studying age-related changes in metabolism and muscle function.

Dan D. Matlock, MD, MPH
Assistant Professor of Medicine
University of Colorado Denver
Anschutz Medical Campus
daniel.matlock@ucdenver.edu



I am interested in understanding how older adults make decisions surrounding invasive technologies. Specifically, I am developing tools to measure and improve the quality of decision making for older adults, using implantable cardioverter-defibrillators as a model.

J. Marvin McBride, MD
Fellow in Geriatric Medicine
University of North Carolina School
of Medicine
jmcbride@unch.unc.edu



I am a geriatric fellow performing health services research into novel models of care for community-dwelling and institutionalized frail elders.

Robert P. McNeil, MD
Instructor in Geriatric Medicine
(as of July 2012)
Johns Hopkins School of Medicine
rmcneil5@jhmi.edu



My goal is to increase the number of physicians with geriatric medicine competencies through teaching and role-modeling and developing educational leadership as a geriatrics fellowship program director. Also, while few underrepresented minorities (URM) enter geriatric medicine, the fellowship at Johns Hopkins has seen an increased number of URM applicants. I plan to study the factors that account for this and build upon this trend. I also plan to develop leader skills as an associate program director and work with the division's Diversity Working Group to increase URM recruits.

Sonal S. Mehta, MD
Assistant Professor of Medicine
Weill Cornell Medical College
som9015@med.cornell.edu



I am a geriatric physician/educator, with special interest in geriatric palliative care, particularly for patients with chronic life-limiting illnesses who are experiencing a high symptom burden over extended periods of time. I am currently expanding a geriatric palliative care curriculum for our medical residents and geriatric fellows as well as developing a new curriculum for hospitalists focused on the care of older adults with chronic diseases.

Ronald John Maggiore, MD
Geriatrics/Medical Oncology Fellow
University of Chicago School of
Medicine
ronald.maggiore@uchospitals.edu



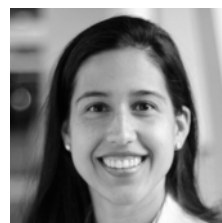
I am a geriatrics/medical oncology fellow with academic interests in clinical geriatric oncology, geriatric oncology education, and medication use patterns/polypharmacy in older adults with cancer. I am currently conducting focus groups of current hematology/oncology fellows in order to evaluate knowledge gaps in, perceptions of, and attitudes towards geriatrics and older adults with cancer in the context of fellowship training. The goal is to help design a survey evaluating these issues on an inter-institutional level, ultimately aiding in the formulation of curricula and competencies in geriatric oncology.

Jeanne E. Maglione MD, PhD
Geriatric Mental Health Research
Postdoctoral Fellow
University of California, San Diego
School of Medicine
jmaglione@ucsd.edu



I am a postdoctoral fellow currently doing a T32 fellowship in Geriatric Mental Health Research (PI: Dilip Jeste) at UCSD. I am also a board-certified psychiatrist and board-eligible in geriatric psychiatry. My research interests are focused on the relationship between depression and both circadian rhythm disturbances and sleep disturbances in older adults.

Anita B. Major, MD
Assistant Professor of Medicine
Baylor College of Medicine
abmajor@bcm.edu



It is my privilege to have learners of all levels accompany me on house calls where we act as primary care providers, perform safety evaluations, and/or provide palliative care. I am in the process of formalizing a curriculum for the third-year medical students who join me on house calls eight times throughout the academic year.

Erika R. Manu, MD
Clinical Instructor of Geriatric and
Palliative Medicine
University of Michigan School of
Medicine
erikaman@med.umich.edu



I am interested in applying palliative care principles to the care of older adults with particular focus on dementia. My Hartford-funded project is to develop an educational intervention for medical residents centered around feeding problems in advanced dementia that could also be disseminated to other healthcare trainees and providers (nursing, speech-language pathologists).

Isaura Menzies, MD, MPH
Senior Instructor of Medicine
University of Rochester School of
Medicine and Dentistry
isaura_menzies@urmc.rochester.edu



My research interest is in improving the health status of elderly individuals who reside in assisted living facilities. This population has very high rates of acute hospital admissions reflecting that these individuals represent a rapidly growing, frail and vulnerable cohort that has not been comprehensively studied and defined. The goal of such research is to inform prevention efforts and lead to significant increase in quality of life for elders and health care cost savings.

David A. Merrill, MD, PhD
Assistant Clinical Professor of
Psychiatry and Biobehavioral
Sciences
David Geffen School of Medicine
at UCLA
dmerrill@mednet.ucla.edu



My research projects focus on the mechanisms by which physical fitness and related factors improve memory function in older adults. We complete fitness assessments in subjects undergoing novel structural and functional magnetic resonance neuroimaging scans.

Rachel K. Miller, MD
Clinical Instructor of Medicine
Perelman School of Medicine at the
University of Pennsylvania
rachel.miller@uphs.upenn.edu



I am currently working to refine and evaluate an interactive transitions of care curriculum for internal medicine and family medicine residents and to expand a service-learning curriculum to train residents to deliver geriatrics presentations in the community and to learn about senior community based resources. In addition, I am developing curricula in geriatrics interprofessional education in home care.

Lillian Min, MD, MSHS
Assistant Professor of Medicine,
Geriatrics
University of Michigan School of
Medicine
lmin@med.umich.edu



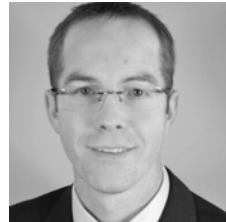
I am a health services researcher with interest in prioritizing care for complex older ambulatory care patients.

Supriya Gupta Mohile, MD, MS
Associate Professor of Medicine
University of Rochester School of
Medicine and Dentistry
Supriya_mohile@urmc.rochester.
edu



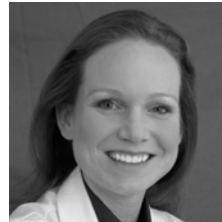
I am a geriatric oncologist interested in improving outcomes of older patients with cancer. My current research focuses on the development and testing of interventions to reduce chemotherapy toxicity and improve quality of life in older patients with cancer.

Andrew A. Monte, MD
Assistant Professor of Emergency
Medicine and Medical Toxicology
University of Colorado Denver
Anschutz Medical Campus
andrew.monte@ucdenver.edu



I am examining how medication interactions affect aging patients' metabolism of metoprolol depending upon underlying genomic variation in hepatic cytochromes. This work is a model for demonstrating the variable effects of environmental factors depending upon the underlying individual patient genomic code.

Kendall F. Moseley, MD
Assistant Professor of Medicine
Johns Hopkins University School of
Medicine
kmosele4@jhmi.edu



I am an endocrinologist specializing in metabolic bone disease and currently researching mechanisms by which deranged glucose metabolism adversely impacts bone quality and quantity in aging populations.

Nadia Mujahid, MD
Assistant Professor of Medicine
Warren Alpert Medical School of
Brown University
nmujahid@lifespan.org



I am a leader in geriatric orthopedic trauma at Rhode Island Hospital and my target population is elderly fragility hip fracture patients. I am implementing geriatric-friendly order sets to prevent medical errors and reduce variability of care among different orthopedic providers and am actively involved in educational activities of the orthopedic residents. Thorough risk assessment and interventions have shown to reduce length of stay, medical complications, and peri and one year post-operative mortality, which is the aim of this program.

Daniel Oates, MD, MSc
Assistant Professor of Medicine
Boston University School of
Medicine
daniel.oates@bmc.org



I am currently a junior faculty member whose work has focused on trainee (medical students, residents, and fellows) education in health literacy.

Ugochi Ohuabunwa, MBBS
Assistant Professor of Medicine
Emory University School of
Medicine
uohuab2@emory.edu



My specialization is in improving care transitions processes and outcomes among low-income minority seniors, with a focus on determining their care transitions needs, implementing a suitable model of care, and improving provider knowledge. I have developed a curriculum for multi-level learners including physician-assistant students, medical students, and medical and pharmacy residents. I am also developing a curriculum for interdisciplinary hospital staff including nurses, case managers, social workers, and pharmacists.

Lauren I. Okamoto, MD
Fellow/Instructor of Geriatric
Medicine
University of Hawaii John A. Burns
School of Medicine
lokamoto@gmail.com



I am currently a geriatrics fellow studying ethnogeriatrics in the nursing home along with the cultural factors that influence the delivery of nursing home care. I am specifically interested in the palliative care practices of Hawaii's Micronesian population.

Karin Ouchida, MD
Assistant Professor of Medicine
Weill Cornell Medical College
kao9006@med.cornell.edu



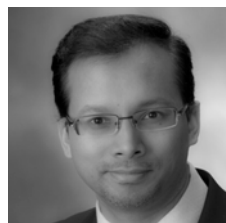
My area of interest is care transitions and the use of home health care to prevent unnecessary readmissions. I am leading a qualitative study exploring the impact of failed communication between home health nurses and physicians on readmissions.

Howard Nachamie, MD, CMD
Assistant Professor of Medicine
Warren Alpert Medical School of
Brown University
Howard_Nachamie@brown.edu



I am a faculty member in the Brown University Division of Geriatric and Palliative Care Medicine. I am developing the curriculum for and directing the Providence VAMC Geriatric Teaching program. Our clinics include medical students and nurse practitioner students, as well as resident trainees in pharmacy and medicine.

Neelesh K. Nadkarni, MD, PhD, FRCPC
Assistant Professor of Medicine
University of Pittsburgh School of
Medicine
nadkarnink@upmc.edu



I am a junior faculty member with clinical expertise in geriatric medicine, geriatric neurology, and hospital medicine. My research focuses on cognition and gait and the effect of age-related brain changes on interventions targeting mobility in older adults.

Arif Nazir, MD, CMD, FACP
Assistant Professor of Clinical
Medicine
Indiana University School of
Medicine
anazir@iupui.edu



As a geriatrics faculty and a researcher I am interested in developing new nursing home models of care. The Hartford funding will allow me to implement an innovative interdisciplinary model of care for nursing home patients with congestive heart failure.

John Newman, MD, PhD
Research Fellow in Geriatric
Medicine
University of California, San
Francisco School of Medicine
newman@ucsf.edu



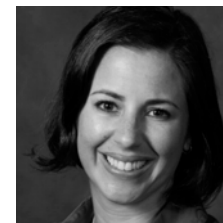
I am a geriatric medicine fellow and postdoc interested in translating advances in the basic science of aging to the care of older adults. I am currently studying how mitochondrial protein acetylation is a molecular link between diet, metabolism, and aging.

Neela Kumari Patel, MD, MPH, CMD
Assistant Professor of Family and
Community Medicine
University of Texas Health Science
Center at San Antonio
pateln4@uthscsa.edu



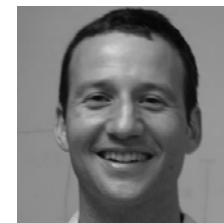
I am an Assistant Professor and the Predoctoral Training Director for the Division of Community Geriatrics, as well as Co-Medical Director of the Acute Care for Elders Unit. I am developing an inter-professional education curriculum for medical, pharmacy, and nursing students, and geriatrics fellows rotating through inpatient settings. It will cover assessment of functional status, medication reconciliation and safety, and home environment assessment to ensure safe transitions from hospital to prevent functional decline after an acute hospital admission.

Carla Perissinotto, MD, MHS
Assistant Professor of Medicine
University of California, San
Francisco School of Medicine
Carla.Perissinotto@ucsf.edu



I am a clinician-educator in the Division of Geriatrics. My main area of interest is in strengthening geriatrics education for internal medicine residents. I am particularly interested in working in diverse communities and improving relationships between the divisions of Geriatrics and General Internal Medicine in order to provide optimal care for older patients, and a great place for residents to train.

Timothy F. Platts-Mills, MD
Assistant Professor of Emergency
Medicine
University of North Carolina School
of Medicine
tplattsm@med.unc.edu



I am an emergency physician with a career goal of becoming an independent researcher improving outcomes after minor trauma in older adults. I am currently conducting a prospective multi-center study to understand the processes leading to persistent pain and functional decline after minor motor vehicle collision in older adults.

Dennis M. Popeo, MD
Assistant Professor of Psychiatry
Mount Sinai School of Medicine
Dr.popeo@gmail.com



I am the current director of the ambulatory geriatric psychiatry clinic and co-director of the geriatric psychiatry fellowship. I am participating in a project to implement an interdisciplinary team-based approach to screening for and treating depression in a large academic geriatric primary care practice based on the IMPACT project developed at the University of Washington.

Aurora Pop-Vicas, MD, MPH

Assistant Professor of Medicine
Warren Alpert Medical School
of Brown University
Aurora_Pop-Vicas@brown.edu



I am an infectious disease physician interested in infection control and prevention in the nursing home setting. My current research explores facility risk factors associated with antibiotic resistance, and aims to reduce infections with antibiotic resistant pathogens in nursing home residents.

Sharda D. Ramsaroop, MD

Assistant Professor of Medicine
Weill Cornell Medical College
shr9016@med.cornell.edu



The focus of my work is on the transition from hospital to home for older adults. My research includes process mapping of current discharge processes and developing a multimodal intervention to equip the interdisciplinary team with skills to effectively manage and coordinate care during patient transitions. I also develop curricula on concepts of care transitions to medical students and residents. I am a practicing geriatrician in both inpatient and outpatient medicine and am the coordinator for our transitional care clinic within the ambulatory care practice.

Erika Ramsdale, MD

Geriatric-Oncology Fellow
University of Chicago School of Medicine
Erika.Ramsdale@uchospitals.edu



I plan to pursue a career in academic medicine, fusing my interests in geriatrics, oncology, and ethics to develop a career path that answers important questions at the intersection of these fields. I am interested in the role of geriatric assessments in individualized therapy plans for older adults with cancer, as well as decision-making in older adults with hematologic malignancies, particularly in those patients with complex medical issues.

Jennifer M. Reckrey, MD

Chief Geriatrics Fellow
Mount Sinai School of Medicine
jennifer.reckrey@mssm.edu



After my geriatric fellowship I will become a home-based primary care provider at Mount Sinai and will work to develop curricula for residents and fellows teaching about the integral role of the interprofessional team.

Jenny Roraback-Carson, MD

Clinical Instructor in Geriatric Medicine
University of Washington School of Medicine
Jenny5@u.washington.edu



My primary interest lies in quality improvement in the practice of geriatrics in both community and academic medicine. I hope to achieve this with teaching in the traditional academic sense toward other practitioners and trainees, but also want to expand this to include education directed toward patients and caregivers outside of the hospital or clinic room.

Matthew L. Russell, MD, MSc

Assistant Professor of Medicine
Boston University School of Medicine
Matthew.russell@bmc.org



I am a board certified physician in geriatrics, internal medicine, and hospice and palliative medicine. My Hartford-funded research focused on high stakes communication skills training for clinicians caring for patients with advanced and end-of-life illness. As a result of this funding, I have become a facilitator-in-training through the American Academy for Communication in Healthcare, where I will be learning and teaching group facilitation skills. Currently, I am developing a curriculum for communication skills training for interdisciplinary teams in the hospital setting.

Saleha Sajid, MD

Geriatric Oncology Fellow
University of Chicago School of Medicine
ssajid@medicine.bsd.uchicago.edu



I am a geriatric oncology fellow specializing in frailty prevention in older men, with castrate-resistant prostate cancer. I am currently developing novel exercise interventions in older men with prostate cancer receiving androgen deprivation therapy, under the mentorship of Drs. Mohile and Dale.

Jeff Sanders, MD, PhD

Geriatric Psychiatry Research Fellow
University of California, San Diego School of Medicine
j2sanders@ucsd.edu



I am a postdoctoral fellow specializing in mouse models of cognition and am currently developing innovative transgenic systems for studying brain activity in cognitive tasks.

Nahid J. Rianon, MD, MPH, DrPH

Assistant Professor of Family Medicine, University of Texas Medical School at Houston
(CoE: Baylor College of Medicine)
Nahid.J.Rianon@uth.tmc.edu



I am currently an Assistant Professor at the University of Texas Medical School at Houston, but have continued to collaborate with Baylor College on the research I started while I was a Hartford Scholar, regarding the relationship between osteoporosis and vertebral fractures by examining bone strength and architecture.

Heather Riggs, MD

Hematology-Oncology/Geriatrics Fellow
Indiana University School of Medicine
hdriggs@iupui.edu



My health services research focuses on determinants of effective delivery of adjuvant chemotherapy for colon cancer among veterans. It is hoped that knowledge gained can be used to guide the design of larger projects as well as to improve delivery of care to those at highest risk of suboptimal outcomes.

Josette A. Rivera, MD

Assistant Professor of Medicine
University of California, San Francisco School of Medicine
jarivera@medicine.ucsf.edu



With Hartford support, I am developing a curriculum for medical, nursing, pharmacy, and physical therapy students that teaches interprofessional teamwork in the context of geriatric care.

Veronica Rivera, MD

Geriatrics Fellow
University of California, San Francisco School of Medicine
veronica.rivera@ucsf.edu



I am currently a geriatrics clinical fellow, and I plan to help improve the geriatrics curriculum for family medicine residents and the curriculum for geriatrics fellows on how to be effective educators.

Elizabeth J. Santos, MD

Assistant Professor of Psychiatry
University of Rochester School of Medicine and Dentistry
Elizabeth_Santos@urmc.rochester.edu



I am a geriatric psychiatrist and director of our emergency psychiatry services. My research and program development interests include family violence and elder abuse education for many groups including medical students and EMS, as well as provision of emergency psychiatric services to older adults and prevention of readmissions to hospitals.

Leslie Scheunemann, MD, MPH

Pulmonary and Critical Care Fellow
University of Pittsburgh Medical Center
(CoE: University of North Carolina School of Medicine)
scheunemannlp@upmc.edu



After completing a Fellowship in Geriatric Medicine and Masters in Public Health at the University of North Carolina, I was accepted to a Fellowship in Pulmonary and Critical Care at the University of Pittsburgh Medical Center. I have been doing research on how ICU clinicians elicit the values of incapacitated patients from their surrogate decision-makers. My long-term goal is to develop evidence-based interventions to improve decisions about value-based treatment pathways for incapacitated patients across the trajectory of critical care.

Jason E. Schillerstrom, MD

Associate Professor/Clinical - Psychiatry
University of Texas Health Science Center at San Antonio
schillerstr@uthscsa.edu



My research focus is on developing pharmacotherapeutic strategies to prevent or treat the neuropsychological impairments mediating functional decline in elders with medical illnesses, particularly how frontal systems performance correlates with functional status. In addition, I plan to continue developing geriatric psychiatry learning opportunities by expanding the clerkship curriculum to include nursing homes, cognitive assessments sensitive to functional status, and Adult Protective Services home visits.

Brijen J. Shah, MD

Assistant Professor of Medicine/
Gastroenterology, Geriatrics and Palliative Medicine
Mount Sinai School of Medicine
Brijen.shah@mssm.edu



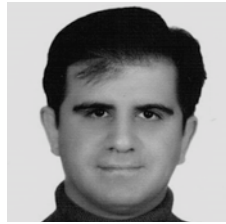
I am a geriatric gastroenterologist and clinician-educator focusing on colon cancer screening decision making in the older population. I am currently developing a curriculum to teach gastroenterology fellows about shared-decision making in colon cancer screening and assessment/evaluation tools to measure communication and geriatric patient care skills in this arena.

Krupa Shah, MD, MPH
Assistant Professor of Medicine
University of Rochester School of
Medicine and Dentistry
krupa_shah@urmc.rochester.edu



My current research is in the field of HIV and aging, with a focus in the prevention and management of frailty. The overall aim in my research is to improve the quality of life in the older adult population.

Armin Shahrokni, MD, MPH
Geriatric Oncology Fellow
David Geffen School of Medicine
at UCLA
ashahrokni@mednet.ucla.edu



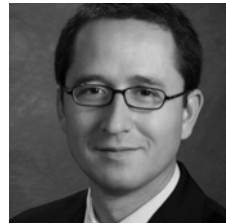
I am a geriatric oncology fellow at the University of California, Los Angeles. My project is to assess the impact of social network size on quality of life of elderly women with newly diagnosed breast cancer. My goal is to emphasize the importance of assessing social factors of elderly patients with cancer at the time of treatment decision making.

Kendra D. Sheppard, MD, MSPH, CMD
Assistant Professor of Gerontology,
Geriatrics, and Palliative Care
University of Alabama at Birmingham
School of Medicine
ksheppard@aging.uab.edu



I am currently exploring symptom burden in community-dwelling older adults and how this affects healthcare transitions.

Alexander K. Smith, MD, MS, MPH
Assistant Professor of Medicine
University of California,
San Francisco School of Medicine
aksmith@ucsf.edu



I am a general internist trained in palliative medicine and health services research interested in understanding quality of life concerns in late life disability.

Rebecca Sudore, MD
Assistant Professor of Medicine
University of California,
San Francisco School of Medicine
Rebecca.Sudore@ucsf.edu



I am a geriatrician and a palliative care physician specializing in health literacy, health communication, and medical decision making. I am currently developing and testing an interactive, multimedia, web-based educational guide to increase patient and surrogate engagement in advance care planning.

Winnie Suen, MD, MSc
Assistant Professor of Internal
Medicine
Boston University School of
Medicine
winnie.suen@bmc.org



I am a geriatrician hospitalist and palliative care consultant. For my Hartford Foundation-funded research I worked on a curriculum for teaching trainees about pressure ulcers. My current interest is in quality improvement. I am developing curricula to teach quality improvement for treating pressure ulcers.

Stasa D. Tadic, MD, MS
Assistant Professor of Medicine
University of Pittsburgh School of
Medicine
std45@pitt.edu



I am a junior faculty member in geriatric medicine with an NIA-funded career development (K23) project investigating the role of the brain and its age-related structural changes in bladder control and urinary incontinence in elderly. I use functional and structural brain imaging in my study and also see older subjects with voiding problems in a continence clinic. My mentor is Dr Neil Resnick, a nationally recognized expert on voiding dysfunction in the elderly.

Cody M. Takenaka, MD
Geriatrics Fellow
University of Hawaii John A. Burns
School of Medicine
codytakenaka@gmail.com



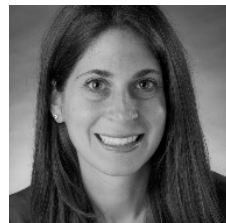
I am a geriatrics fellow planning on becoming a clinician-educator after graduation. I will specialize in palliative care in the nursing home setting.

Gabe Solomon, MD
Assistant Professor of Internal
Medicine
University of Michigan School of
Medicine
gsolomn@umich.edu



I am a clinician-educator specializing in transitions of care for older adults. I am developing a teaching curriculum for residents that will improve their knowledge and skills when caring for older adults transitioning through the health care system. I have also focused on quality improvement projects at my institution related to transitional care, including a new discharge summary and medication reconciliation tool.

Lyssa Sorkin, MD
Instructor in Clinical
Columbia University Medical Center
(CoE: Weill Cornell Medical
College)
ls2748@columbia.edu



I am currently an Instructor in Clinical at Columbia University Medical Center in the Department of Rehabilitation and Regenerative Medicine. My main area of interest is in Geriatric Rehabilitation in order to preserve, maximize and restore function, while maintaining quality of life in this patient population. I am working on a curriculum to educate medical students and residents to increase their understanding of rehabilitation issues encountered in the geriatric population including sarcopenia, osteoarthritis, falls, and polypharmacy.

Margarita Sotelo, MD
Assistant Professor of Medicine
University of California,
San Francisco Medical School
sotelomm@medsfgh.ucsf.edu



My long-term goal is to become a local and national leader in improving the care of hospitalized older adults, and in teaching these skills to learners across professional disciplines. In order to provide the best care possible to the complex, acutely ill elderly patient, it is imperative that trainees in other healthcare disciplines, such as nursing and pharmacy, are also sufficiently trained in geriatrics principles. I plan to work with educators in other disciplines to construct curricula in inter-professional care of the elderly patient.

Keith R. Stowell, MD, MSPH
Assistant Professor of Psychiatry
University of Pittsburgh School of
Medicine
stowellkr@upmc.edu



I am currently a junior faculty member at the University of Pittsburgh School of Medicine Western Psychiatric Institute and Clinic. I am working with colleagues in geriatric psychiatry, geriatric medicine, pharmacy, and nursing to develop a curriculum on interdisciplinary care in the nursing home setting.

Katherine Thompson, MD
Assistant Professor of Medicine
University of Chicago School of
Medicine
katherine.thompson@uchospitals.edu



I am a geriatrician specializing in care for frail older adults and I am currently developing a curriculum to teach evaluation and management of frail older adults to internal medicine residents.

Kristen Thornton, MD
Senior Instructor of Medicine and
Family Medicine
University of Rochester School of
Medicine and Dentistry
Kristen_Thornton@URMC.
Rochester.edu



As a Hartford Scholar my area of interest is in the development, implementation, and assessment of novel educational strategies and interventions to enhance training in geriatrics for both family medicine residents and geriatric medicine fellows. My projects include developing a geriatric rehabilitation curriculum for geriatric medicine fellows, teaching family medicine residents in a new outpatient geriatric consultation service, and creation of a new family systems and aging component for the residency's psychosocial medicine curriculum.

Shachi Tyagi, MD
Clinical Instructor, Geriatric
Medicine and Gerontology
University of Pittsburgh School of
Medicine
tyagis@upmc.edu



I am an academic geriatrician currently doing a post-doctoral research fellowship in aging. My research interests include disorders of lower urinary tract, incontinence, and nocturia in the elderly. Currently, my research project involves investigating the effect of behavioral intervention for insomnia on nocturia.

Kathleen Tschantz Unroe, MD, MHA
Assistant Professor of Medicine
Indiana University School of
Medicine
kunroe@iupui.edu



I am a geriatrician focused on clinical work, policy, and research in the nursing home setting. Through the Hartford Foundation grant, I will be evaluating a program for enhanced post-acute care heart failure management in a local nursing home, including interviews with patients and their families.

Ipsit V. Vahia, MD
Assistant Professor of Psychiatry
University of California,
San Diego School of Medicine
ivahia@ucsd.edu



My research focus is successful aging in the context of chronic illness. I am working on identifying patterns and predictors of sub-syndromal depressive symptoms and emotional aging in older persons with HIV infection.

G. van Londen, MD, MSc
Assistant Professor of Medicine
University of Pittsburgh School of
Medicine
vanLondenJ@upmc.edu



I am a geriatric oncologist specializing in elderly cancer survivorship care. Currently, I am developing a curriculum for trainees and health providers of different departmental and divisional affiliations about the management principles of elderly cancer survivors.

E. Camille Vaughan, MD, MS
Assistant Professor of Medicine
Emory University School of
Medicine
camille.vaughan@emory.edu



My research focus is to improve the management of urinary symptoms in older adults, specifically those living with Parkinson disease.

Karen L. Villalon, MD
Instructor of Geriatric Medicine
University of Colorado Denver
Anschutz Medical Campus
karen.villalon@ucdenver.edu



I am currently an Instructor in the Division of Geriatric Medicine and am interested in strategies to optimize bone health in older adults. My research focuses on the impact of weight loss and weight regain on bone mineral density in postmenopausal women using a new imaging technique called quantitative computed tomography (QCT).

George C. Wang, MD
Assistant Professor of Medicine
Johns Hopkins University School of
Medicine
gwang7@jhmi.edu



I am a geriatrician and immunologist leading a research program focused on advancing understanding of the aging immune system, integrating basic molecular and cellular investigations with epidemiologic approaches, and translating this knowledge into useful clinical interventions for older adults.

Wei Wang, MD
Geriatrics Fellow
Weill Cornell Medical College
wew9012@nyp.org



I am a geriatrics fellow whose research focuses on finding ways to utilize mobile health technology to better diagnose and treat chronic pain in the geriatric population.

Peter R. Ward, MD
Geriatric Oncology Fellow
David Geffen School of Medicine
at UCLA
PWard@mednet.ucla.edu



My research interests are in the supportive care and assessment and management of complications in elderly cancer patients treated with chemotherapy. My current project is studying fall-related injuries in elderly patients who have received potentially neurotoxic chemotherapy. The study is a retrospective analysis of the SEER-Medicare database.

Franklin Watkins, MD
Assistant Professor in Internal
Medicine
Wake Forest School of Medicine
fwatkins@wakehealth.edu



I am a geriatrician at Wake Forest School of Medicine with interest in new models of health care delivery as a means to improve medical education. My clinical and educational focuses are improving transitions of care and the development of a patient-centered medical home model for patients with dementia at a local adult day center.

Deborah Villarreal, MD
Clinical Assistant Professor of
Medicine
University of Texas Health Science
Center at San Antonio
villarreal4@uthscsa.edu



I am a clinician-educator with an interest in general geriatrics education for medical students and residents. I also have an interest in the care of older critically ill patients. I am developing a curriculum for an ambulatory geriatrics clinic rotation for internal medicine residents.

Ahmad von Schlegell, MD, MPH
Geriatric Hospitalist
William Osler Health System
(CoE: David Geffen School of Medicine at UCLA)
a_von@hotmail.com



I have been accepted to a PhD program in health economics at McMaster University which I will undertake within the year. I will also continue my clinical work at a McMaster University site.

Kamal C. Wagle, MD
Second Year Fellow in Geriatrics
Baylor College of Medicine
kcwagle@bcm.edu



I am a geriatrics fellow studying initiation of cholinesterase inhibitors in hospitalized patients. Initiating cholinesterase inhibitors in an inpatient hospital setting has been found to be inappropriate and could be detrimental to patients more likely to have delirium. My interest is in appropriate medication usage for elderly patients with dementia. Upon completion of the project, I will focus on teaching geriatrics to medical students and residents, both face-to-face and through web-based, case-based modules that will allow my teaching efforts to be measured and evaluated.

Jonathan Wanagat, MD, PhD
Assistant Professor of Medicine
David Geffen School of Medicine
at UCLA
jwanagat@mednet.ucla.edu



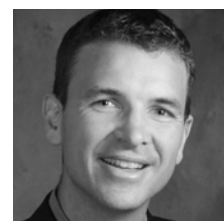
I am a geriatrician and biogerontologist studying the role of mitochondrial DNA mutations in muscle aging. I am developing models of mitochondrial mutations, mutation detection techniques, and single muscle fiber assays.

Aida Wen, MD
Assistant Professor of Geriatric
Medicine
University of Hawaii John A. Burns
School of Medicine
aidawen@hawaiiintel.net



I am the course director for the required fourth-year medical student rotation in geriatric and palliative medicine, where I implemented an innovative curriculum to incorporate principles of interdisciplinary team care. I have also developed curricula in interdisciplinary team care for residents in internal medicine and family medicine who have required rotations in geriatrics. I have developed an innovative curriculum on nursing home medical directorship for geriatric medicine fellows, and started a new course on interdisciplinary geriatric care for allied health faculty at a local community college.

Eric W. Widera, MD
Assistant Professor of Medicine
University of California, San
Francisco School of Medicine
eric.widera@ucsf.edu



My academic goal is to improve the care given to elderly patients with severe chronic and/or terminal conditions through educational innovations and program development. I am working on ways to increase recruitment of residents into the field of geriatrics, creating curricula for both geriatrics and palliative care fellows focused on the care of elderly patients with complex or life-threatening illnesses, and using social media to create a forum for discourse, recent news and research, and freethinking commentary on geriatric topics.

Ilse R. Wiechers, MD, MPP
Advanced Fellow in Geriatric
Medicine
Yale School of Medicine
ilse.wiechers@yale.edu



I am a geriatric psychiatrist whose work focuses on medical decision making in the care of older patients with coexisting medical and mental illness. Specifically, I study prescribing of psychotropic medications to better understand off-label and unnecessary prescribing practices. I teach geriatrics trainees about health policy, advocacy, and quality improvement; provide clinical supervision to geriatrics fellows, psychiatry residents, medical and physician assistant students; and supervise the geriatric psychiatry clinical case conference.

Brie A. Williams, MD, MS
Associate Professor of Medicine
University of California,
San Francisco School of Medicine
brie.williams@ucsf.edu



My research focuses on the healthcare needs of older adults at the intersection between geriatric medicine and the legal system. Specifically, I am applying the principles of geriatrics research to address the emerging public health crisis of an aging criminal justice population, to expose policy, law makers, and other professions to the discipline of geriatrics, and to teach non-geriatrics healthcare providers how to optimize the care of older adults.

Julie A. Williams, MD
Assistant Professor of Medicine
Wake Forest School of Medicine
juwillia@wakehealth.edu



I am a junior faculty geriatrician focusing on the impact of chronic illness, multi-morbidity, and medical complexity in older populations. I will be investigating the burden of chronic illnesses and geriatric conditions on functional disability, seeking to better understand the public health implications of such conditions individually and in combination.

Lindsay A. Wilson, MD
Clinical Instructor/Advanced Fellow
in Geriatrics
University of North Carolina School
of Medicine
lwilson3@unch.unc.edu



I am an advanced geriatric medicine fellow and clinician-educator specializing in geriatric curriculum development. I teach a medical student elective on geriatric topics where I have piloted a service-learning curriculum. I have also developed a workshop using standardized patients to teach specialty faculty about delirium and contributed to an on-line module to teach nurses about delirium. My goal is to create a core competency geriatric curriculum for internal medicine residents and other disciplines such as nursing and social work.

Valerie K. Wilson, MD
Geriatrics Fellow
Wake Forest School of Medicine
wilson@wakehealth.edu



I am a geriatrics fellow and have a research interest in the prevention and treatment of cognitive impairment and the potential role vitamin D has in cardiovascular morbidity.

Rollin M. Wright, MD, MPH
Assistant Professor of Medicine
University of Pittsburgh School of
Medicine
rmw27@pitt.edu



I am a geriatrician specializing in long-term care medicine and clinician education, and currently completing a Masters of Science in Medical Education. I am the director of the geriatrics track for our internal medicine residency program, and I have developed and begun to study a curriculum for the geriatrics track residents.

Linwah Yip, MD
Assistant Professor of Surgery
University of Pittsburgh School of
Medicine
yipl@upmc.edu



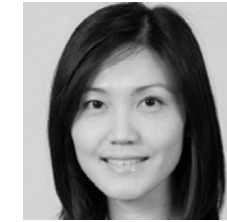
I am an endocrine surgeon interested in improving thyroid cancer outcomes in older patients by using molecular markers to help predict more aggressive tumors and to eventually direct effective therapies.

Megan Young, MD
Clinical Fellow in Geriatrics Boston
University School of Medicine
MeganE.Young@bmc.org



I am a clinician-educator fellow in geriatrics with a teaching focus on communication and transitions of care. I am currently developing a curriculum to teach geriatrics and humanism to first-year medical students during the gross anatomy lab. I have also created a workshop for residents focused on transitions of care at the end of life.

Jacqueline K. Yuen, MD
Clinical Geriatrics Fellow
University of California,
San Francisco School of Medicine
jacqueline.yuen@ucsf.edu



I am a clinical geriatrics fellow who is developing a curriculum for internal medicine residents to teach about care of older adults in the hospital setting.

Ezequiel Zamora, MD
Geriatric Hospitalist
(CoE: University of North Carolina
School of Medicine)
(no email address available)



During my fellowship at UNC, I provided care to geriatric patients in multiple settings including a long-term care facility, a continuity clinic, and an inpatient geriatric service. I also developed and implemented, along with my mentor, Dr. John S. Kizer, the first Latino Geriatrics Specialty Clinic at UNC. I am currently a geriatric hospitalist practicing at the Appalachian Regional Healthcare System in Boone, North Carolina.

Jennifer M. Wu, MD, MPH
Assistant Professor, Obstetrics and
Gynecology
Duke University School of Medicine
Jennifer.wu@duke.edu



I am a urogynecologist focused on the clinical care of women with pelvic floor disorders, including urinary incontinence and pelvic organ prolapse, and my Hartford Foundation-funded research is focused on the genetic epidemiology of these conditions.

Mamata Yanamadala, MBBS
Medical Instructor, Geriatrics
Duke University School of Medicine
mamata.yanamadala@duke.edu



I am a geriatrician specializing in quality improvement in the elderly. I am currently involved in quality improvement projects relating to recognition of delirium in the elderly in the emergency department and peri-operative care of the elderly. I am also involved in developing a curriculum for inter-professional faculty in quality improvement.

Sevil Yasar, MD, PhD
Assistant Professor of Medicine
Johns Hopkins University School of
Medicine
syasar1@jhmi.edu



I am a geriatrician and my research, clinical work, and teaching are focused on late-life memory disorders. My research is in the area of pharmacology and late-life memory disorders, with special focus on identifying novel targets for pharmacological receptors that can lead to better treatment or prevention.

Yanping Ye, MD
Assistant Professor/Clinical – Family
& Community Medicine
University of Texas Health Science
Center at San Antonio
YeY@uthscsa.edu



My primary areas of focus are interdisciplinary team education and quality improvement (QI) project implementation, particularly on how geriatric transitional care can be improved through system change, process improvement, and inter-professional team education. I plan to continue to expand the geriatric transitional care curriculum to include skilled nursing and assisted living facilities, home health care, and dementia care units, and incorporate QI projects and inter-professional learning into family medicine residents' curriculum.

Rebekah Dass Zechariah, MD
Geriatrics Fellow
University of Wisconsin-Madison
School of Medicine and Public
Health
rebekahdass@gmail.com



I am a clinical geriatrics fellow pursuing an advanced year of fellowship as a clinician-educator with an emphasis in integrating geriatric competencies across the undergraduate and graduate medical education curricula. My project aims at defining discrete clinical milestones in two geriatric-specific areas of cognitive/behavioral health and falls/gait disorders.

Ryan M. Zitnay, MD
Geriatric Medicine Fellow
Boston University School of
Medicine
ryan.zitnay@bmc.org



I am a geriatric medicine fellow, in the clinician-educator track, planning to create and evaluate a curriculum for geriatrics fellow reflection rounds, focusing on their experiences with death, dying, and the declining health of the geriatric patients they care for.

Centers of Excellence in Geriatric Medicine and Geriatric Psychiatry

Center	Director
Baylor College of Medicine	George E. Taffet, MD*
Boston University	Rebecca A. Silliman, MD, PhD*
Brown University	Richard W. Besdine, MD
Cornell University	M. Carrington Reid, MD, PhD*
Duke University	Harvey Jay Cohen, MD
Emory University (Southeast Center of Excellence)	Theodore M. Johnson II, MD, MPH*
Harvard University	Lewis A. Lipsitz, MD
Indiana University	Steven R. Counsell, MD
Johns Hopkins University	Samuel C. Durso, MD, MBA, AGSF
Mount Sinai School of Medicine	Rosanne M. Leipzig, MD, PhD*
University of Alabama at Birmingham (Southeast Center of Excellence)	Richard M. Allman, MD
University of California, Los Angeles	Alison A. Moore, MD, MPH
University of California, San Diego (Geriatric Psychiatry)	Dilip V. Jeste, MD
University of California, San Francisco	Seth Landefeld, MD*
University of Chicago	William Dale, MD, PhD*
University of Colorado at Denver	Robert S. Schwartz, MD*
University of Hawaii	Kamal H. Masaki, MD*
University of Michigan**	Jeffrey B. Halter, MD*
University of North Carolina at Chapel Hill	Jan Busby-Whitehead, MD*
University of Pennsylvania	Jerry C. Johnson, MD
University of Pittsburgh	Neil Resnick, MD
University of Pittsburgh (Geriatric Psychiatry)	Charles F. Reynolds III, MD*
University of Rochester	William J. Hall, MD
University of Texas Health Science Center at San Antonio	Michael Lichtenstein, MD, MSc*
University of Washington	Itamar B. Abrass, MD
University of Wisconsin-Madison	Sanjay Asthana, MD*
Wake Forest University	Jeff D. Williamson, MD, MHS*
Yale University	Mary Tinetti, MD*

*These directors served on the 2012 Program Advisory Committee, along with Lisa Granville, MD, Kenneth Schmader, MD, and Gregg Warshaw, MD.

**Raymond Yung, MB, ChB, will be the director starting July 1, 2012.

About AFAR

Founded in 1981, AFAR has championed the cause and supported the funding of science in healthier aging. Due to the shortage of physicians and researchers dedicated to the bioscience of aging, AFAR partners with foundations, corporations and individuals to fund important research into the fundamental mechanism of aging, age-related health, and diseases such as Alzheimer's disease, cancer, heart disease, and other illnesses.

For more information, please visit AFAR's website www.afar.org or www.geriatricsrecruitment.org.

About the John A. Hartford Foundation

Founded in 1929, the mission of the John A. Hartford Foundation is to improve the health of older Americans. The Foundation is a committed champion of health care training, research, and service system innovations that will ensure the well-being and vitality of older adults. For more information about The John A. Hartford Foundation, please visit www.jhartfound.org.

Centers of Excellence National Program Office/ AFAR staff

Odette van der Willik
Director Grant Programs

Aimee Cegelka
Program Associate

John A. Hartford Foundation staff

Christopher A. Langston, PhD
Program Director

Nora OBrien-Suric, PhD
Senior Program Officer



**Centers Of Excellence National Program Office
administered by the
American Federation For Aging Research**

55 West 39th Street, 16th Floor
New York, NY 10018
212-703-9977

**sponsored by the
John A. Hartford Foundation**

55 East 59th Street, 16th Floor
New York, NY 10022
212-832-7788